



Scars and strength

An IU sophomore survives meningitis, speaks to raise awareness

see FEATURES, page 9



NEW CASTLE PRISON BREAK

see CITY & STATE, page 5

WEDNESDAY

HIGH
64

LOW
58



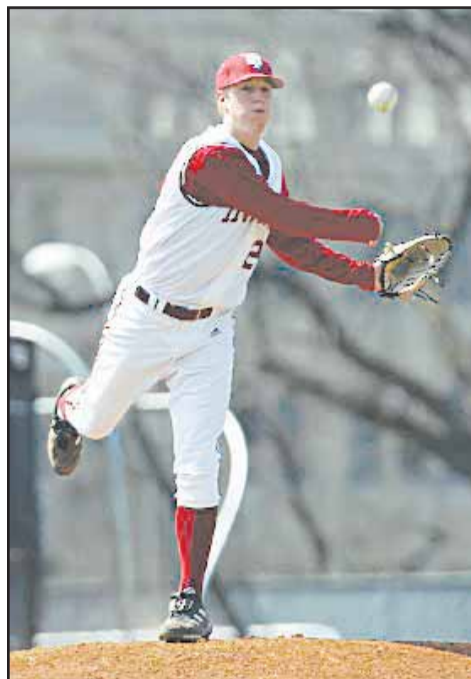
INDIANA DAILY STUDENT

VOLUME 140, ISSUE 40

WEDNESDAY, APRIL 25, 2007

FREE • 16 PAGES

BASEBALL



GEOFFREY MILLER • IDS

Freshman IU pitcher Billy Kitchen makes a pick-off throw to first base against Evansville on April 10 at Sembower Field.

IU baseball coach to face old squad

■ Team looks to get back on track as Tracy Smith returns to alma mater

By Tim O'Brien

tpobrien@indiana.edu

After being swept in a four-game series at Ohio State this weekend, the IU baseball team will play at Miami University of Ohio today with a home field of sorts.

Today's game will be the first time IU coach Tracy Smith returns to the school he attended as a student and served as the head coach at for nine years before coming to IU for the 2006 season. Tonight's game is scheduled for 7 p.m.

INSIDE PITCH

■ For more IDS coverage of the IU baseball team, check out our online blog at www.idsnews.com/blogs/insidepitch.

"It'll be good to go back and see some of the kids we recruited and see (Miami) coach (Dan) Simonds who is definitely one of my better friends," Smith said.

In nine seasons at Miami as the head coach, Smith led the team to a school-record 317 wins, 317-220-1 overall record, with two NCAA Tournament appearances and two MAC Tournament champs.

Last season, the Hoosiers hosted Miami at Sembower Field, defeating the Redhawks 5-0 as then-sophomore Doug Fleenor took a no-hitter into the seventh inning before allowing a hit. Fleenor would throw a complete game one-hitter in earning the win.

see BASEBALL, page 8

IU, Microsoft align for cybersecurity

■ Community shares computer threats to thwart problems early

By Heather Haemker

hhaemker@indiana.edu

Microsoft and IU are forming a new partnership that will help make IU's computer systems safer.

Microsoft Corporation and the Research and Education Networking Information Sharing and Analysis Center are forming an alliance that will extend the reach of Microsoft

Security Cooperation Program to include colleges and universities.

According to a press release, REN-ISAC is a community for sharing sensitive information regarding cybersecurity threats, incidents, response and protection. The center was established by IU with close cooperation of the Internet2 and EDUCAUSE organizations to help protect the nation's higher education and research community from cyber attacks, according to the press release. The basic mission of this new alliance is to enhance computer security measures worldwide.

"The goal of bringing Microsoft in is that it will provide a rich source of information in which we can support REN-ISAC member's cybersecurity and response," said Doug Pearson, technical director of REN-ISAC.

The purpose of the alliance is to have a more consolidated team effort toward protecting computers, according to the REN-ISAC public relations department. The press release states that the agreement will share information regarding computer vulnerabilities, exploits and fixes for bugs and viruses. In addition, it will also

provide Microsoft a single point of contact with the REN-ISAC's growing membership. The membership currently consists of 500 individual members representing nearly 200 different institutions.

"IU established REN-ISAC as a major component of broader efforts to improve information-technology security at colleges, universities and research facilities," said Mark Bruhn, executive director of REN-ISAC and associate vice president for telecommunications at IU, in a

see MICROSOFT, page 8

Holy experiences

Students flock to campus ministries

By Chip Cutter • ccutter@indiana.edu

Editors note: This article is the first in a two-part series. The second will run Thursday.

It's 8 on a Thursday night, and the lights inside a stadium-style lecture hall in the Chemistry Building are dim.

Students pump their hands in the air, scream out to their friends and randomly exchange hugs. A six-person band, complete with a cymbal-banging drummer, rocks on.

No, this isn't your typical worship service. This is Campus Crusade for Christ, an interdenominational Christian ministry that's one of a growing number of organizations targeting college students who want personal religious experiences.

At Cru, as it's called, organizers put special emphasis on making the worship events relevant, using contemporary music and real-world topics like drinking and sex to engage students.

"We believe there are timeless truths that it's up to us to effectively communicate and capture in the language and the concepts that students use today," said Tony Arnold, the organization's national spokesman.

The strategy seems to be working at IU, where staff members say attendance is up and students are interested.

Every week, more than 300 people pack into the group's Thursday evening meetings while, throughout the week, about 50 smaller groups — averaging 10 students each — converge in places like dormitory basements and floor lounges to study the Bible.

In the past 10 years alone, the international organization has seen dramatic growth, increasing its number of campus locations from 500 in 1996 to 1,163 today.

A SUPPORT NETWORK

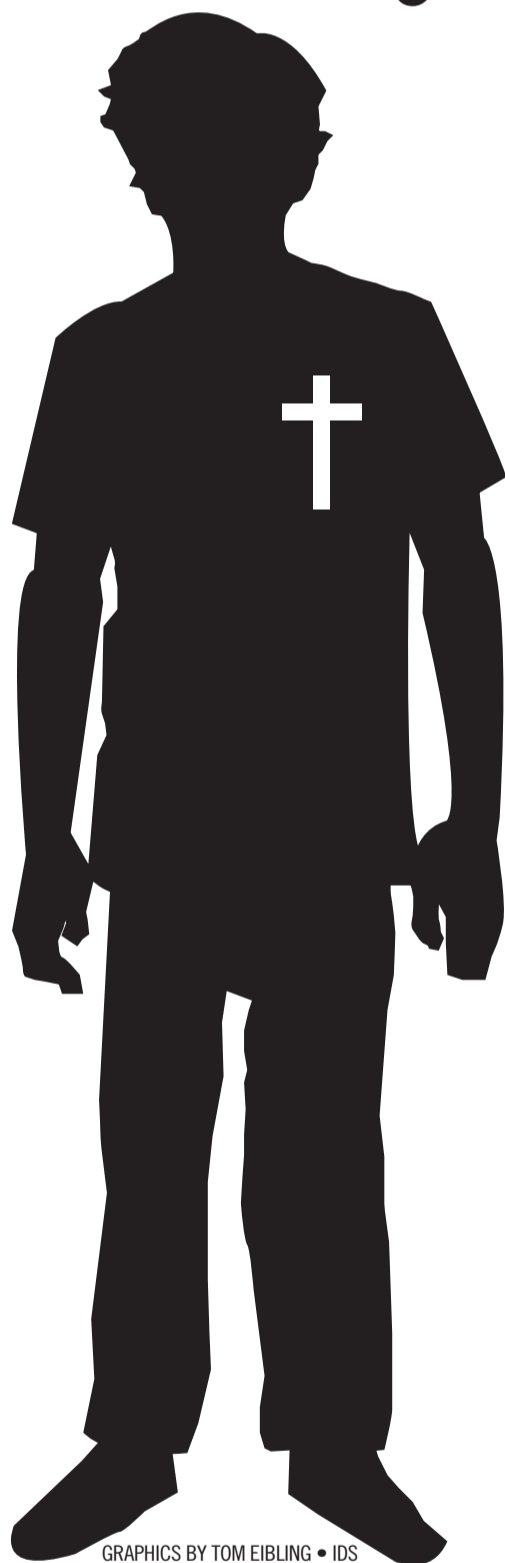
Chris Robertson, a senior business major, is one of the group's success stories at IU.

He wasn't particularly interested in religion during his freshman year, but as a sophomore he started attending a weekly Cru Bible study in his dorm.

There, students talked candidly about their beliefs, relationships and sins, and became so close that they extended the conversations over meals or late-night video games in each other's rooms. He was hooked.

"People see the need for Christ in their life. They see this need and realize that they

see RELIGION, page 8



GRAPHICS BY TOM EIBLING • IDS

Campus Crusade for Christ Involvement

Cru campus locations in 1996  500

Cru campus locations today  1,163

• 300: Average number of students attending weekly Cru meetings
• 59: Students living in Christian Fellowship house

Former IUSA leader travels across Europe

■ Business student says trip changed his view of studying

By Maria Srour

msrour@indiana.edu

Alex Shortle has not shaved in five months, and his face clearly shows it. Behind the lumberjack beard sits last year's IU Student Association president, completely content with his decision to take the school year off and travel through Europe.

"I had done three years of school ... and I felt like everything had played out for me to take the year off," Shortle said. "I had just finished I-CORE and had finished

being president and it just seemed like the perfect time to do it ... it was like something was telling me to take this time off, to reflect on what I've done the past three years and in high school and come back a stronger person."

The need for a razor isn't the only thing that's stronger now for Shortle. The experience, he said, was truly formative, teaching him to appreciate the smaller things and take less for granted.

"I was alone most of the time, and that gives you a lot of time to reflect on who you are and what you've been doing, what you plan on doing," Shortle said. "For a college kid, it's just about perfect, especially three years in. You've had

see TRIP, page 8



COURTESY PHOTO

Former IUSA President Alex Shortle looks over Dubrovnik, Croatia in February 2006. Shortle traveled from Ireland to Turkey during his year off from school. He will return to IU as a senior in the fall.

Sustainability task force to monitor on-campus environmental issues

■ Group works to assess current and future resources

By Heather Haemker

hhaemker@indiana.edu

A Sustainability Task Force on campus will address current environmental issues in order to preserve and conserve resources for a healthy, happy future for the IU campus.

IU recently created the Sustainability Task Force as a way to

develop a plan for improving the University's environmental role in the challenges of reducing energy use, increasing recycling and other environmental issues.

The task force is made up of 15 people appointed by IU Vice President Terry Clapacs, according to a press release. The task force defines sustainability as "meeting the need of the present without compromising the ability of future generations to meet their own needs."

see SUSTAINABILITY, page 8



Ernie Pyle Hall 120, 940 E. 7th Street
Bloomington, IN 47405
Newsroom: 855-0760 • Advertising: 855-0763

Classified: 855-0763 • Fax: 855-8009
E-mail: ids@indiana.edu
www.idsnews.com

INDEX

ARTS
CAMPUS
CITY/STATE

page 12
page 2
page 4

CLASSIFIED
COMICS
NATION/WORLD

page 14
page 13
page 6

OPINION
SPORTS

page 7
page 10



PLEASE RECYCLE